

Search

Go

North Fork Smith Trailhead

[Site Map](#)

Siuslaw National Forest

[Home](#)

[Special Places](#)

Recreation

- [Beaches & Dunes](#)
- [Bicycling](#)
- [Camping & Cabins](#)
- [Fishing](#)
- [Hiking](#)
- [Horse Riding & Camping](#)
- [Hunting](#)
- [Nature Viewing](#)
- [OHV Riding & Camping](#)
- [Outdoor Learning](#)
- [Picnicking](#)
- [Scenic Driving](#)
- [Water Activities](#)

[Alerts & Notices](#)

[Passes & Permits](#)

[Maps & Publications](#)

[Land & Resources Management](#)

[Learning Center](#)

[Working Together](#)

[About the Forest](#)

[News & Events](#)

Contact Information

Siuslaw National Forest Supervisor's Office
3200 SW Jefferson Way
Corvallis, OR 97331
541-750-7000

CAPE Perpetua Visitor Center
2400 Highway 101
Yachats, Oregon 97498
541-547-3289

Oregon Dunes Visitor Center
855 Highway 101
Reedsport, Oregon 97467
541-271-3611

Central Coast Ranger District
1130 Forestry Lane
Waldport, Oregon 97394
541-563-8400

Hebo Ranger District
31525 Hwy 22
Hebo, OR 97122
503-392-5100

This is the trailhead for the [North Fork Smith Trail #1351](#)
Also provides access for [Kentucky Falls Trail](#)

See Trail pages for more information.
[At a Glance](#)

Current Conditions:	1/13/2018: Open.
Water:	No
Restroom:	No
Passes:	Recreation pass or fee required? NO
Operated By:	Forest Service
Information Center:	Oregon Dunes National Recreation Area Visitor Center

General Information

Directions:

From Reedsport, OR:

From Reedsport, Oregon travel north on Hwy 101 across Umpqua River Bridge turning right onto Forest Road #48 (Lower Smith River Road). Travel 15.9 miles then turn left onto Forest Road #48A (North Fork Smith River Road). Travel 10.6 miles, turning right onto Forest Road #23. Travel for 4.3 miles to the North Fork Smith Trailhead on the left.

From Eugene, OR:

From Eugene, Oregon travel west on Highway 126 for 33.0 miles. Between mile markers 26 and 27, turn right (south) at the "Whittaker Creek Recreation Area" sign. Travel 1.6 miles turning right across a bridge onto Road #18-8-28 at another Whittaker Creek sign. Travel this road for 1.5 miles, turning to the left onto Road #18-8-28.1 (Dunn Ridge Road) Continue on this road for 7.0 miles to a "T" shaped junction at the end of the pavement. Turn left onto Road #18-8-9 (Knowles Creek Road). This road will take you along the north side of Roman Nose Mountain. Travel for 1.6 miles veering to the right onto Forest Road #919 Travel Forest Road #919 for 2.8 miles to a "T" shaped junction. Turn left onto Forest Road #23 and travel for 5.5 miles to the North Fork Smith Trailhead on the right.



[Trail Map](#) (Geospatial PDF ~ 1.8 mb)

To use your mobile device's built-in GPS to track your location on the map:
Download the geospatial PDF
Download & install an app that reads geospatial PDFs
Find out more about [geospatial PDFs and mobile apps](#).

Recreation Map

Map showing recreational areas. [Map Information](#)



[Fire Information](#)

Related Information

North Fork Smith Trailhead

[News & Events](#)

Alerts & Warnings

[Oregon Dunes Beach Access Limited March 15 - Sept 15 to Protect Snowy Plovers](#)

[View All Forest Alerts ...](#)

Quick Links

- [Fire Information](#)
- [Motor Vehicle Use Maps](#)
- [Know Before You Go: Current Conditions](#)
- [Campsite Reservations](#)

Areas & Activities

[Find An Area](#)

Related Links

[Oregon Dunes Designated Routes Can I bring my dog?](#)

Highlights

[Accessible Adventures Videos](#)
[Recreation Passes](#)

Recreation Passes

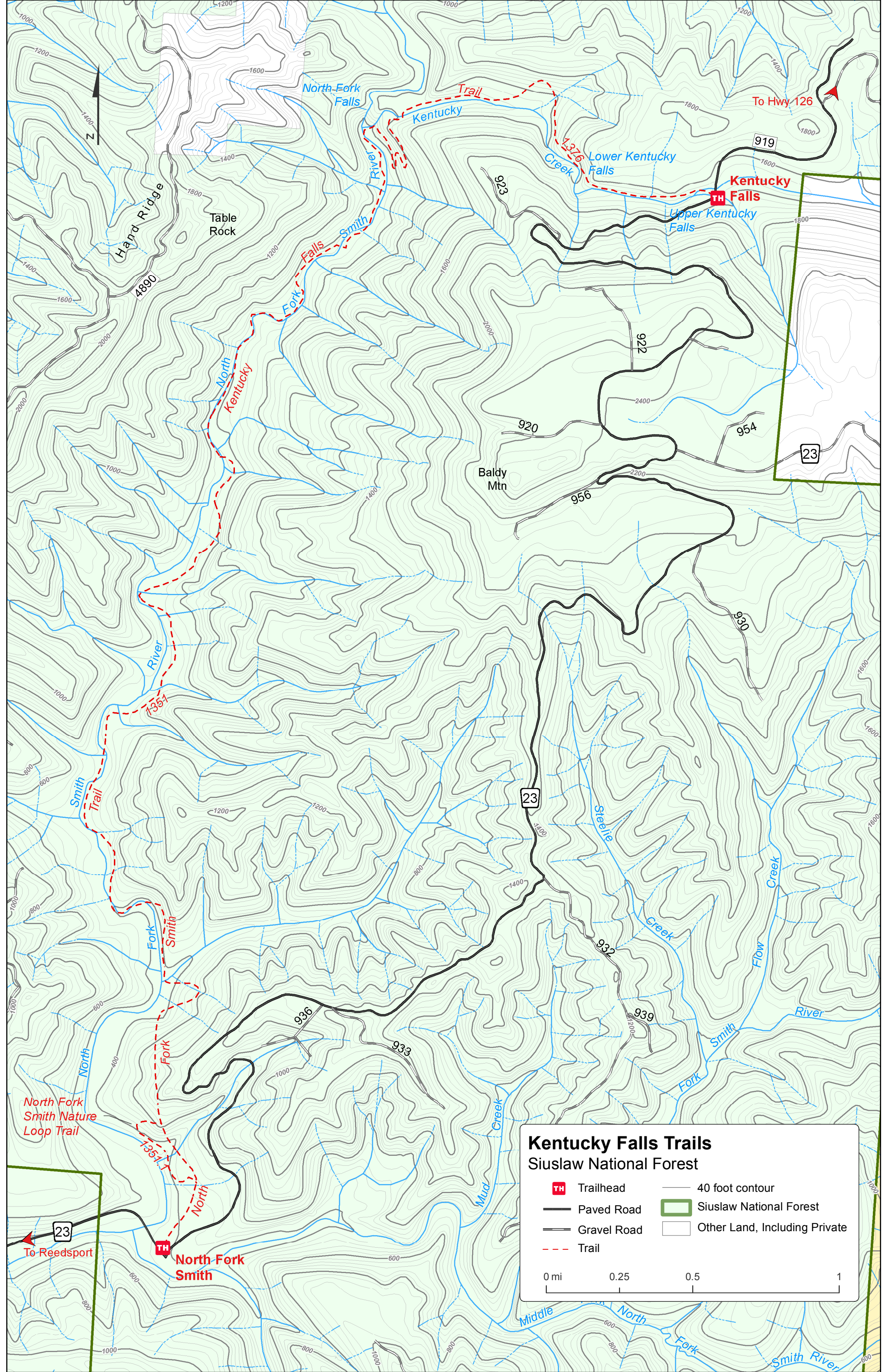
- [Buy one online](#)
- [Buy one in person](#)

-- Select a City --

Submit

Location

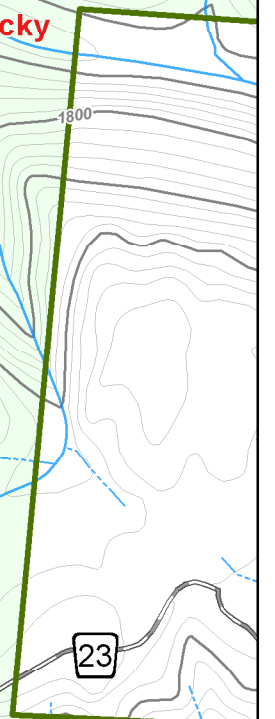
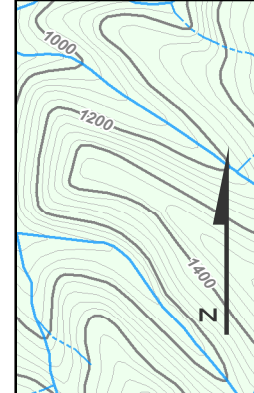
Latitude : 43.8750009
Longitude : -123.828114



Kentucky Falls Trails Siuslaw National Forest

	Trailhead		40 foot contour
	Paved Road		Siuslaw National Forest
	Gravel Road		Other Land, Including Private
	Trail		

0 mi 0.25 0.5 1



Hand Ridge
 Table Rock
 Baldy Mtn
 North Fork Falls
 Lower Kentucky Falls
 Upper Kentucky Falls
 North Fork Smith
 North Fork Smith Nature Loop Trail
 Kentucky Falls
 To Hwy 126
 To Reedsport